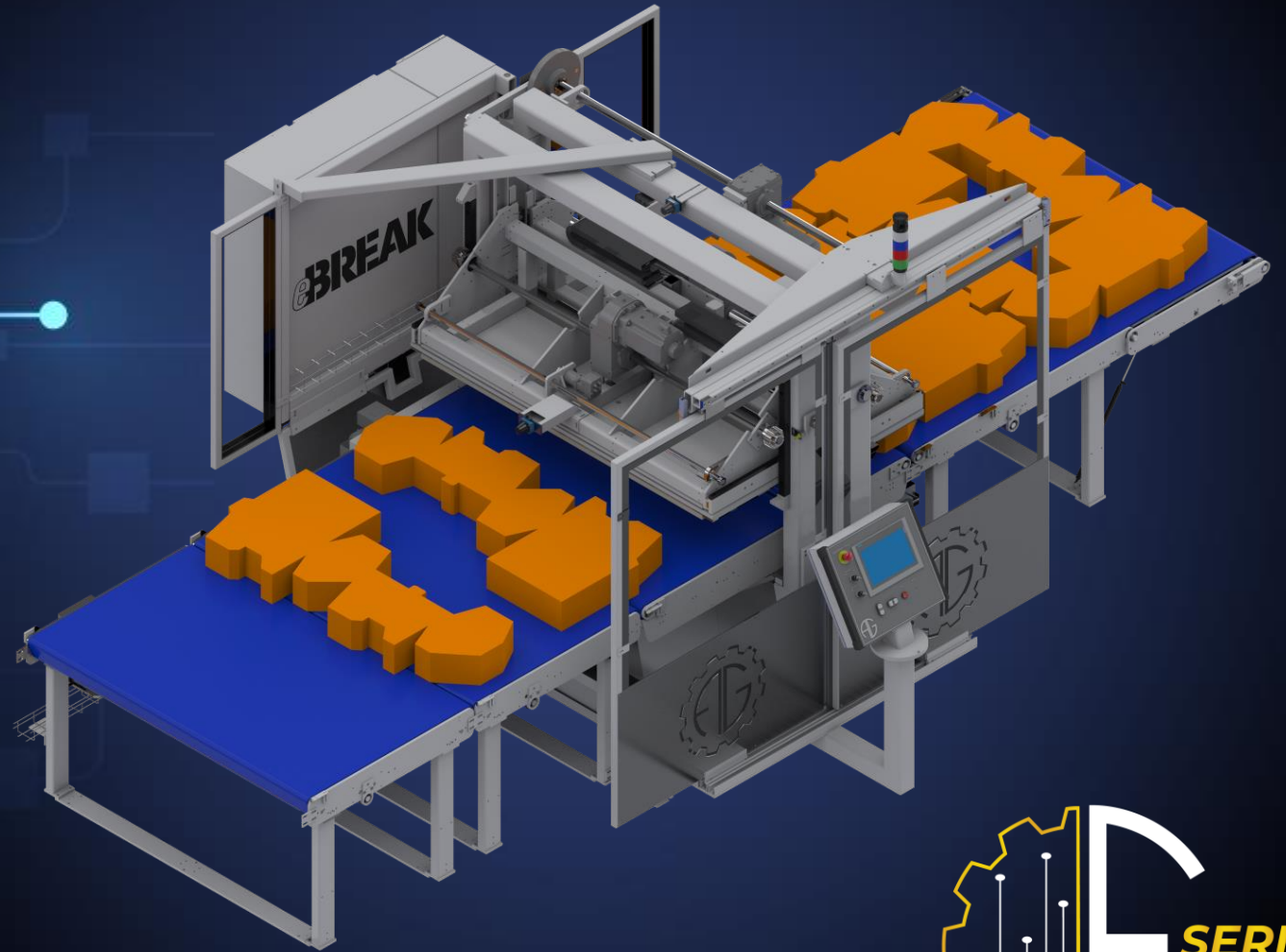


Committed to Innovation.

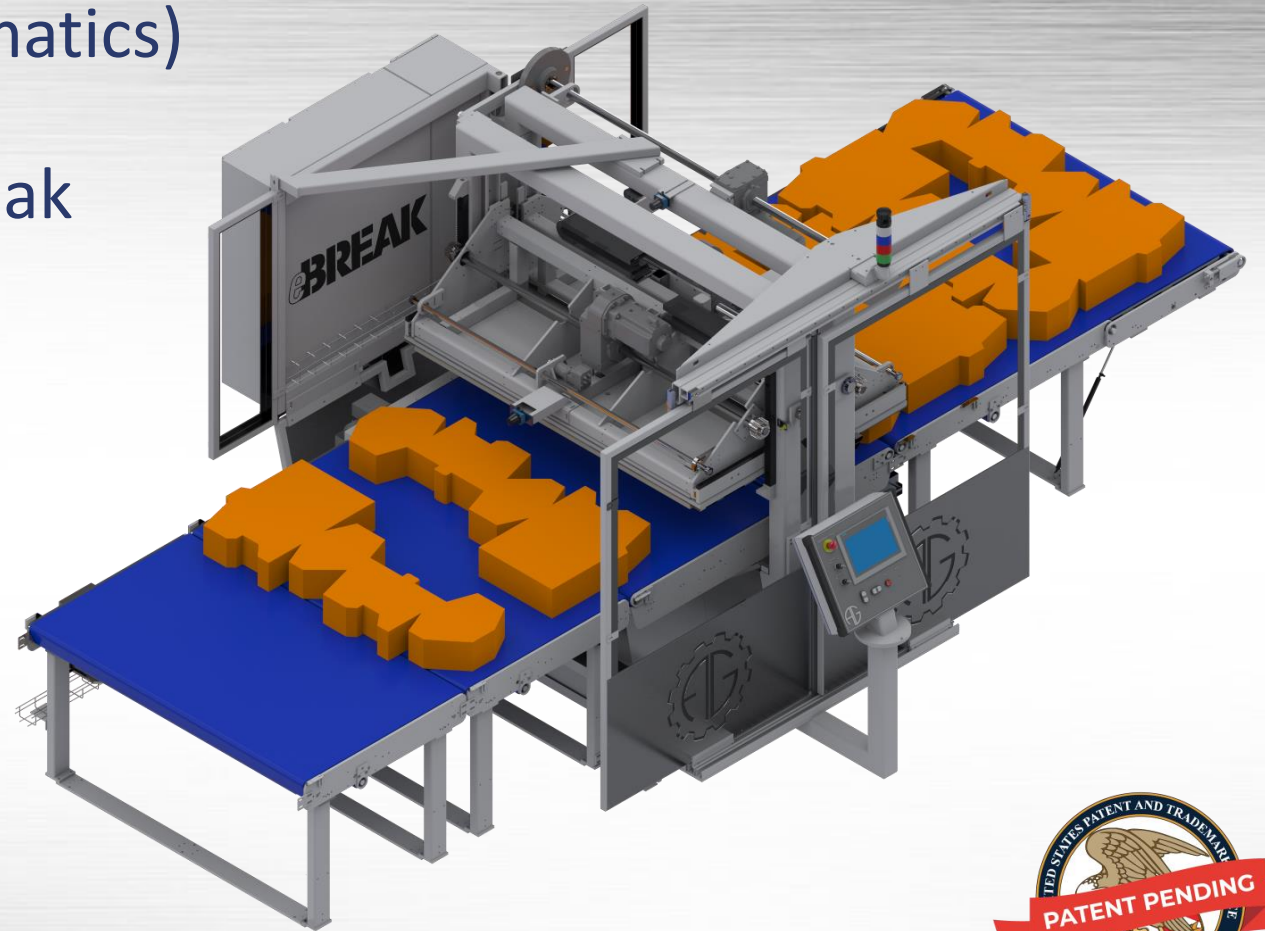
eBREAK



eBREAK - Bundle Breaker



- All electric (NO hydraulics, NO pneumatics)
- Servo drive system for clamp and break
- 2D LIDAR Technology
- Offset, Nested, & Straight
- GO AG Mobile App enabled
- AG DUO Digital Twin



Energy & Environment



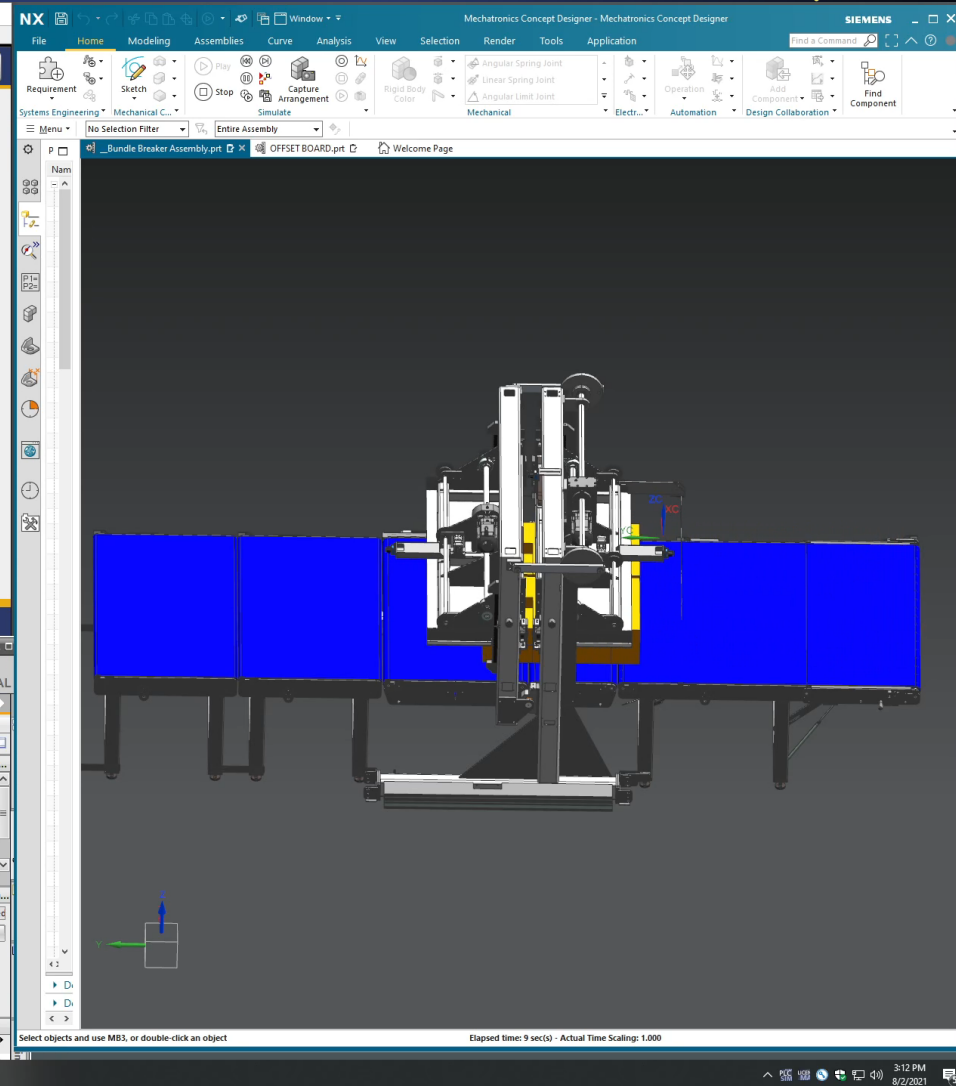
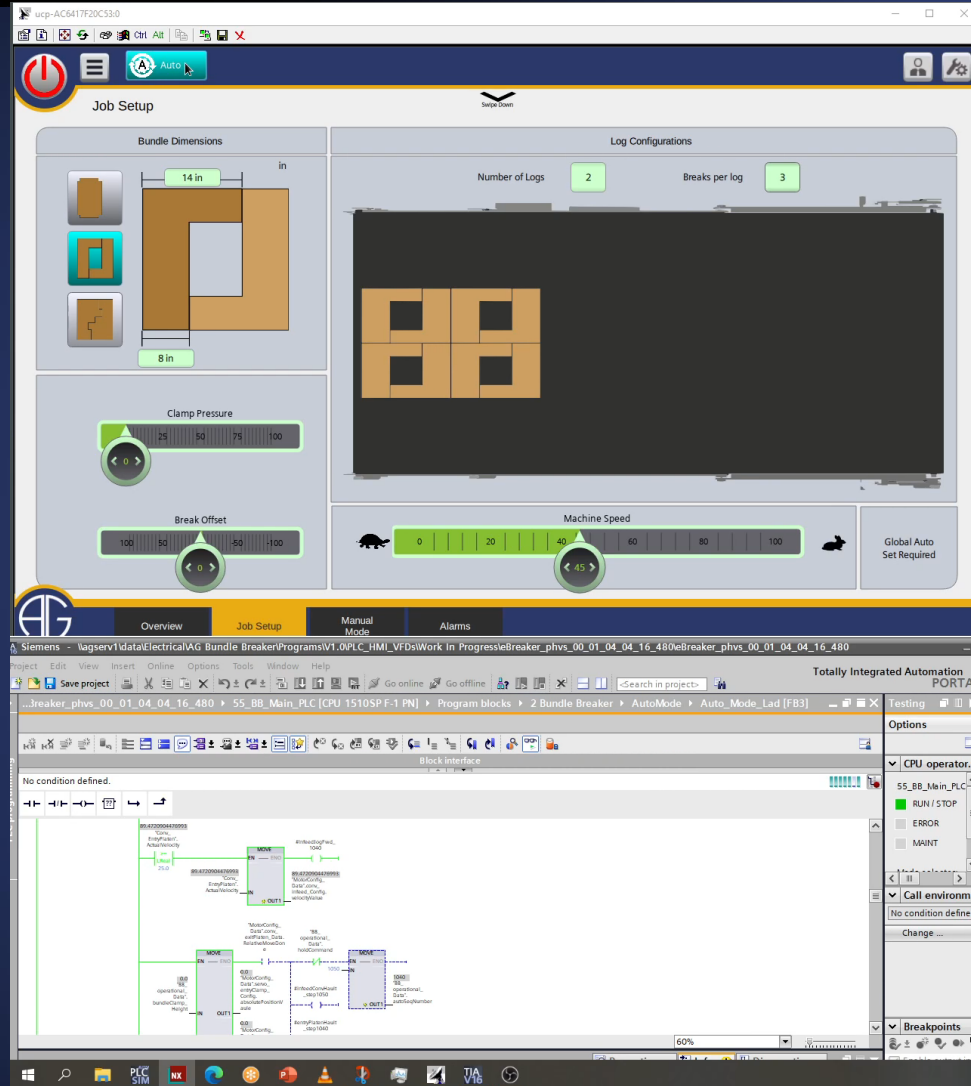
- **ECO Mode:**
 - Motors & brakes turn off, Drives go to standby mode.
- **Inherent Energy Efficiency:**
 - No leaky & inefficient pneumatics or hydraulic systems.
- **Noise pollution:**
 - No high-pitched hydraulic pump, cooling fan, or air leaks.
 - Smooth electro-mechanical motion of the clamping platens and break axis motion.
- **Reduce waste – shiftable platens**
- **Reduction in maintenance & downtime.**



Digital Twin Technology



- R&D
- Collaboration
- Training
- Service
- Future!



Committed to Innovation.



eBREAK – Straight Break



The screenshot displays the 'Job Setup' interface for the eBREAK system. At the top, there is a status bar with a power icon, a menu icon, a 'Manual' button, an 'Alarm' button with a checkmark, and a yellow warning message: 'Infeed Conveyor Not in Run Position Auto Mode Not Permitted'. Below this, the 'Job Setup' section is divided into two main panels: 'Bundle Dimensions' and 'Log Configurations'. The 'Bundle Dimensions' panel shows a diagram of a bundle with a width of 8, a 'Pass Through Mode' button, and a 'All Breaks Nested' button. The 'Log Configurations' panel shows 'Number of Logs' set to 2 and 'Breaks per log' set to 3, with a visual representation of a log bundle. At the bottom of the interface, there are three sliders: 'Clamp Pressure' (set to 69), 'Break Offset' (set to 0), and 'Machine Speed' (set to 84). A 'Global Auto Set Required' button is also present. The bottom navigation bar includes 'Overview', 'Job Setup' (highlighted), 'Manual Mode', 'Corner Table', and 'Alarms'. The AG logo is visible in the bottom left corner.



eBreak: Servo Driven



- Bundle:
 - Tall
 - Messy
 - Slightly Offset
- Minimum clamping height <math><1''</math>



eBREAK – Straight Break



Committed to Innovation.



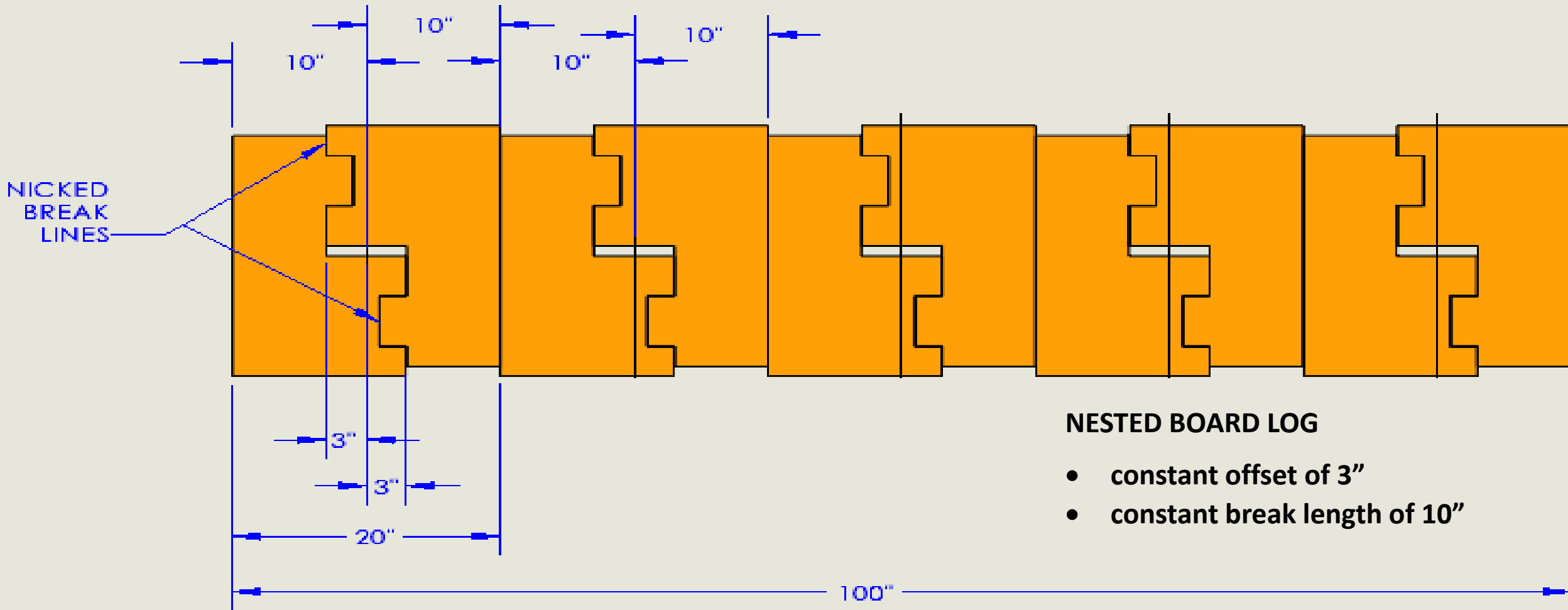
eBREAK 12", Cycle < 4.5 sec



Notice the shifttable platens?



eBREAK Shiftable Platens



eBREAK - Nested & Straight



The screenshot displays the eBREAK control interface. At the top, there is a status bar with a power button, a menu icon, a 'Manual' mode indicator, an 'Alarm' indicator, and a yellow warning message: 'Infeed Conveyor Not in Run Position Auto Mode Not Permitted'. Below this is the 'Job Setup' section, which includes a 'Swipe Down' button and a 'Parameter Set' button. The main interface is divided into several panels. On the left, the 'Bundle Dimensions' panel shows a 3D perspective view of a bundle with dimensions of 14 (width) and 8.00 (height). A 'Pass Through Mode' button is visible. Below this are sliders for 'Clamp Pressure' (set to 49) and 'Break Offset' (set to 0). On the right, the 'Log Configurations' panel shows a top-down view of a 3x3 grid of logs. It includes 'Number of Logs' set to 3 and 'Breaks per log' set to 5. Below this is a 'Machine Speed' slider set to 83. A 'Global Auto Set Required' button is located at the bottom right of the main interface. At the bottom, a navigation bar contains buttons for 'Overview', 'Job Setup' (which is highlighted), 'Manual Mode', 'Corner Table', and 'Alarms'. The AG logo is visible in the bottom left corner of the interface.



Automatic Shifting Platens



Questions - eBREAK



- Break bundles that are straight or offset nicks in the same log?
- Supreme and fast mechanical motion control?
- Feature GO A.G. Mobile APP & DUO Digital Twin technologies?
- Does automatic shiftable platens increase throughput?
- Ability to increase production throughput and decrease waste?



Booth #807

