

NOTICE: This is a DRAFT of a TAPPI Standard in ballot. Although available for public viewing, it is still under TAPPI's copyright and may not be reproduced or distributed without permission of TAPPI. This draft is NOT a currently published TAPPI Standard.

WI _____ 201202.03 _____

T _____ 1015 _____

BALLOT NO. _____ 05 SARG _____

DRAFT NO. _____ 04 _____

DATE _____ May 16, 2024 _____

WORKING GROUP
CHAIR _____ Brian Traynor _____

SUBJECT
CATEGORY _____ Fiberglass Mat _____

RELATED
METHODS _____ See "Additional Information" _____

CAUTION:

This Test Method may include safety precautions which are believed to be appropriate at the time of publication of the method. The intent of these is to alert the user of the method to safety issues related to such use. The user is responsible for determining that the safety precautions are complete and are appropriate to their use of the method, and for ensuring that suitable safety practices have not changed since publication of the method. This method may require the use, disposal, or both, of chemicals which may present serious health hazards to humans. Procedures for the handling of such substances are set forth on Safety Data Sheets which must be developed by all manufacturers and importers of potentially hazardous chemicals and maintained by all distributors of potentially hazardous chemicals. Prior to the use of this method, the user must determine whether any of the chemicals to be used or disposed of are potentially hazardous and, if so, must follow strictly the procedures specified by both the manufacturer, as well as local, state, and federal authorities for safe use and disposal of these chemicals.

Fiber glass mat uniformity (visual defects)
(Five-year review of Standard Practice T 1015 sp-15)
(Underscores, notes, and strikethroughs show changes from Draft 3)

1. Scope

This method is a description of fiber glass mat attributes that define visual uniformity in the finished mat product.

2. Significance

This description is intended to list visual defects of glass mat.

3. Procedure

Visual inspection should be made during the manufacture of glass mat at the unwind stand prior to packaging or prior to conversion. Specific definitions of the degree of non-conformity of mat to a prescribed guideline must be agreed upon between buyer and seller.

4. Attributes (visual defects)

- 4.1 The mat is to be of uniform thickness and have a smooth surface.
- 4.2 The mat shall be free from foreign contamination such as oil, grease, and dirt.



Fig. 1 Example of foreign contamination.

- 4.3 The mat shall be free from wrinkles, ripples, folds, and creases.



Fig. 2 Example 1 of wrinkles, ripples, folds, and creases.

Deleted: ¶
¶
4.1 Specific definitions of the degree of non-conformity of mat to a prescribed guideline must be agreed upon between buyer and seller.
Deleted: 2
Deleted: 3

Formatted: Centered
Deleted: 4
Deleted: W
Deleted: or
Deleted: can be no more than 4" by 1/8" elevation and must be less than 8 (eight) per roll

Formatted: Centered

3 / Fiber glass mat uniformity (visual defects) T 1015 om-92



[Fig. 3 Example 2 of wrinkles, ripples, folds, and creases.](#)

Formatted: Centered

4.4 The mat shall be free from torn edges and holes.



[Fig. 4 Example of torn edges.](#)

Deleted: 5

Deleted: greater than 1 in. (25 mm) in diameter. No more than 8 (eight) holes are allowed per roll

Formatted: Centered



[Fig. 5 Example of hole.](#)

Formatted: Centered

4.5 The mat shall be free from wet binder spots and thin areas.

Deleted: 6



Fig. 6 Example of wet binder spot.

Formatted: Centered



Fig. 7 Examples of thin areas.

Formatted: Centered

4.6 The mat shall be free from fiber clumps and strings.

Deleted: F

Deleted: must be < 7 per 12" x 12" sample with size < 3/32". The number of

Deleted: must be less than or equal to 3 (three) per 2"x2" area with the size of single string no great than 3" in length



Fig. 8 Example of fiber clump.

Formatted: Centered

5 / Fiber glass mat uniformity (visual defects) T 1015 om-92

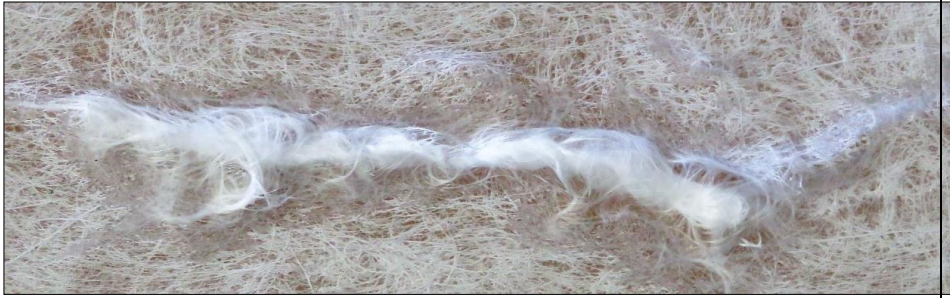


Fig. 9 Example of fiber clumps and strings.



Fig. 10 Examples of strings.

- 4.7 The mat shall be free from delamination.
- 4.8 The mat shall be free from fuzzy or unbonded loose surface and edge fibers.



Fig. 11 Example of fuzzy or unbonded loose surface and edge fibers.

- 4.9 The mat shall not exhibit telescoping.

Formatted: Centered

Formatted: Centered

Formatted: Centered

Deleted: in excess of 0.5 in. (12.7 mm) and telescoped ridges in excess of 3/4 in. (19 mm) high and less than 1 in. (25 mm) wide

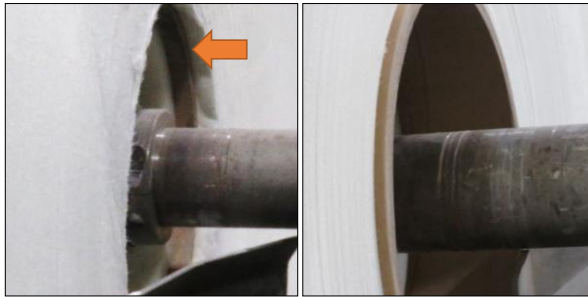


[Fig. 12 Example 1 of telescoping.](#)



[Fig. 13 Example 2 of telescoping.](#)

4.10 The mat shall not exhibit core misalignment.



[Fig. 14 Example of core misalignment.](#)

Formatted: Centered

Deleted: greater than 1/4 in. (6.4 mm)

Formatted: Centered, Line spacing: single, No widow/orphan control, Tab stops: Not at 0" + 0.38" + 0.88" + 3.5"

Deleted: ¶

5. Precision

A statement of precision is not applicable to this practice.

7 / Fiber glass mat uniformity (visual defects) T 1015 om-92

6. Keywords

Fiber glass mats, Uniformity, Visual defects, Defects, Formation, Vision

7. Additional information

[7.1](#) Effective date of issue: To be assigned.

[7.2](#) Primary revisions in the 2024 edition included eliminating references to specific tolerances and the inclusion of images of defects.

Your comments and suggestions on this procedure are earnestly requested and should be sent to the TAPPI Standards Department. ■